

SUPREME EFFICIENCY



WHEELED TRACTOR

RS SERIES
1304/1604

PT BUMI CITRA TRAKTOR NUSANTARA

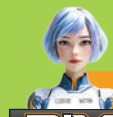
Head Office

WTC Mangga Dua, Lantai 3A,

Jl. Mangga Dua Raya No. 8, Kel. Ancol, Kec. Pademangan,
Jakarta Utara, 14430. Telp. (021) 3001 2318 ext 201

Branch Office

- Jakarta
- Pekanbaru
- Jambi
- Medan
- Surabaya
- Banjarmasin



BCTN INTELLIGENCE EXCLUSIVE INTERFACE

BIXI

0811-138-8686

More Info :

- PT. Bumi Citra Traktor Nusantara
- [bctn.official](#)
- PT Bumi Citra Traktor Nusantara (BCTN)
- admin.service@bctn.co.id

WHEELED TRACTOR

RS Series 1304/1604

The leading international technical standard is applied, with quality assurance from Zoomlion. Complete functions, convenient operation, safe and reliable experience, perfectly adapting to various environments. A leading product in dry fields, you're worth it.

PRODUCT FEATURE

POWERFUL & ECONOMICAL

- The Yuchai six-cylinder high-pressure common rail engine of National Emission Standard III is selected, with a displacement of 6.5L.
- Turbocharged in-cylinder direct-injective engine, with electronically-controlled fuel injection system from Bosch, can accurately control fuel supply under various working conditions to keep it economical with a stable power output.
- The 300L large fuel tank can operate continuously for more than 12 hours.
- The 180MF low-temperature large battery can be easily started at minus 40°C, easily coping with extreme weather.

RELIABLE HYDRAULIC AND COOLING SYSTEM

- The engine and chassis hydraulic fuel are equipped with independent radiators, which has better heat dissipation effect.
- The 65L hydraulic fuel tank doubles the working capacity.
- The chassis and hydraulic system apply three-purpose fuel, which greatly improves the mechanical reliability.
- The heat dissipation efficiency is higher with 59.5 square meters radiator area, 15.8 square meters intercooling heat dissipation area, water tank with high-efficient cooling pipes, and heat dissipation pump of 12ml/r displacement.

NO MORE FATIGUE DRIVING, ONLY HIGH PROFICIENCY

- Professional four-post double door/air conditioning and heating / sunroof cab, wide driving vision, spacious and comfortable interior.
- The adjustable steering wheel and suspension seat with armrests can perfectly fit the body shape and driving habits.
- The soundproof cotton has been added, along with a pressure relief valve and rubber shock-absorbing gasket, to reduce interior noise.
- The dashboard provides a real-time display of the vehicle's operating status, with functions for setting and monitoring engine performance.
- The full hydraulic steering system can steer back in time under various working conditions and speeds.
- The mechanical synchronous device brake can switch between unilateral and bilateral.

PRODUCT PARAMETERS

Model	Unit
Overall dimension (L×W×H)	mm
Wheelbase	mm
Minimum mass during operation	kg
Minimum ground clearance	mm
Engine emission	/
Rated power	kW
Fuel consumption rate	g/kW·h
Clutch type	/
Number of gears of the gearbox	/
Tyre size (front wheel / rear wheel)	/
Type of hydraulic lifting system	/
Maximum lifting capacity	kN
Tillage control method	/
Hydraulic output multiway valve	/
Hydraulic hitch	/
Traction force	kN
PTO output power	kW
Power output speed	r/min
Cab	/



RS Series 1304/1604	
Overall dimension (L×W×H)	5200×2435×3250
Wheelbase	2640
Minimum mass during operation	5810
Minimum ground clearance	450
Engine emission	National emission standard III
Rated power	95.6/117.6
Fuel consumption rate	≤250
Clutch type	Dry, independent control double action
Number of gears of the gearbox	16F+8R Meshing sleeve type
Tyre size (front wheel / rear wheel)	14.9-26 / 18.4-38
Type of hydraulic lifting system	Lifting device with separated units
Maximum lifting capacity	40
Tillage control method	Adjustable position and height, high pressure
Hydraulic output multiway valve	3 groups
Hydraulic hitch	Three-point rear suspension, Type III
Traction force	51
PTO output power	85/105
Power output speed	540/1000
Cab	Air conditioner



Ceiling



Pressure relief valves



Hydraulic output



Fuel tank



Adjustable Seat